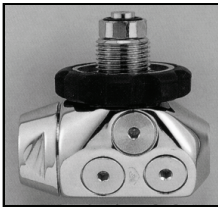




**Cousteau/ Spectrum/ SEA DIN Adapter  
Authorized Dealer Installation Procedures**



**Precautions & Warnings**

**WARNINGS, CAUTIONS, and NOTES** used in this manual have the following significance:



**WARNING**

Maintenance, operating procedures, and techniques that may result in personal injury or death if not carefully followed.



**CAUTION**

Maintenance techniques that will result in damage to parts if not carefully followed.



**NOTE**

Service procedures and maintenance techniques that are considered important enough to emphasize.

**WARNING:** Installation of an Aqua Lung DIN adapter must only be performed by an Authorized Aqua Lung Dealer, and must not be attempted by unauthorized individuals. Failure to obtain this service through an Authorized Aqua Lung Dealer may result in faulty installation, which could lead to severe injury or death.

**WARNING:** DO NOT exceed the torque values prescribed in these installation instructions. Excessive torque can overstress parts, which could cause them to weaken or break. Weak parts cannot always be detected, and may fail unexpectedly while in use, possibly resulting in serious injury or death.

**Removal of the Yoke Assembly**

1. Install a vise mounting tool (P/N 1003-95) or a discharged CO<sub>2</sub> cartridge with 3/8" female to 7/16" male adapter (P/N 1020-85) into the high pressure (HP) port of the first stage main body(3). (To discharge a CO<sub>2</sub> cartridge, install first into a CO<sub>2</sub> firing mechanism and discharge the gas into a B.C.. DO NOT attempt to pierce the cartridge outside of such a mechanism.)

**WARNING:** DO NOT use a CO<sub>2</sub> cartridge which has not been discharged. Doing so may cause the cartridge to rupture, which could result in severe personal injury.

2. Secure the vise mounting tool in a bench vise, with the first stage positioned vertically so the yoke(2) faces up. (See Fig. 1.)

**CAUTION:** DO NOT mount the first stage directly in a vise. Doing so may result in permanent damage which could render the first stage inoperable or unsafe for use.

3. Loosen the yoke screw to remove the dust cap, and apply a modified 26mm open end wrench to the inlet fitting(1). Using firm, steady force, turn the inlet fitting counter-clockwise to loosen and remove from the first stage body. Lift the inlet fitting and yoke (with screw and dust cap) off the body, and set these items aside.

**NOTE:** The DIN Adapter package may be used to store the yoke and inlet fitting for future use.

**Installation of the DIN Adapter**

1. Disassemble the filter retainer(10) from the DIN inlet fitting(6), if necessary, to lubricate all O-rings with either Christo Lube® or Dow 111 silicone grease. Reinstall all O-rings(9&5&8) onto the inlet fitting and the filter retainer.

2. Check to ensure that the filter(7) lays flat inside the top of the inlet fitting, with the coarse surface facing up. Mate the filter retainer into the top of the inlet fitting, and tighten clockwise by hand until snug.

3. Mate the inlet fitting through the handwheel(4), and thread clockwise into the inlet orifice of the first stage body(3).

4. Apply a torque wrench with 19mm hex socket to the inlet fitting and tighten clockwise to a torque value of 22 foot-pounds (±2).

5. Apply a torque wrench with 4mm hex key to the filter retainer and tighten clockwise as needed to ensure that it is tightened to a torque value of 15 foot-pounds (±2).

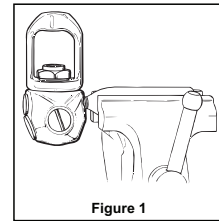
**Final Inspection Procedure**

To test the installation of the adapter, mount the regulator, fully assembled with second stage attached, onto a HP 3.5 cylinder with DIN valve as follows:

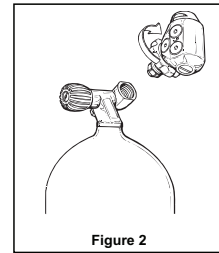
1. Thread the adapter handwheel clockwise by hand onto the DIN valve until it is lightly snug. (See Fig. 2.)

2. Open the cylinder valve slowly to pressurize the regulator and check for any possible leaks.

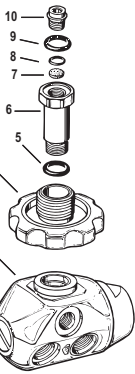
3. If leakage is detected, immerse the valve and first stage in fresh water while pressurized to determine the source. Disassemble and correct as needed. Repeat the installation and final inspection procedure.



**Figure 1**



**Figure 2**



**Preventative Maintenance for DIN Adapters & Valves**

Because moisture may enter DIN valves and adapters more easily than yoke regulators and valves, it is especially important to advise the customer of the following maintenance procedures:

- Before attaching the regulator to a cylinder, open the cylinder valve slightly to blow out any moisture which may be inside the mouth of the valve.
- After each dive, it is important to use care when removing the regulator from the cylinder valve in order to prevent moisture from entering the regulator inlet fitting or the cylinder valve.
- Prior to storage, soak and rinse the complete regulator system while pressurized and mounted onto a cylinder.
- Ensure that the first stage and cylinder valve protector caps are completely dry before installing them.

**WARNING:** When filling the HP 3.5 cylinder, DO NOT exceed the 3500 PSI maximum pressure. Unlike conventional steel cylinders, the HP 3.5 does not allow for 10% overfills. Disregard of this specification may cause damage to the cylinder which could result in serious injury or death.